

## **ALLIED LABORATORIES CORP.**

---

716 North Iowa Avenue  
Villa Park, IL 60181  
Phone: 630.279.0390  
Fax: 630.279.3114

Scratch Art Company, Inc.  
P.O.Box 303  
Avon, MA 02322

May 23, 2001

Attn: Nathan Polsky

Allied Report # 23190

Samples of Multicolor Classic Multicolor Paper, a product of the Scratch Art Company, were examined to determine whether or not the product conforms to standards established by the Federal Hazardous Substances Act (FHSA) and by ASTM D-4236.

The products are a paper and a board coated with multicolored inks, and topped by a layer of black ink. Scratching off some of the black ink with a wooden stick leaves a multicolored pattern. Any black ink dust which is produced should not become airborne.

Based on my forty plus years of professional experience, I believe the product will not present chronic health hazards to users.

This conclusion is based on the knowledge that, when properly used, there is only minimal contact of the coating material with the skin. Any small amounts which may adhere to the skin may be safely removed by brushing, or by washing with soap and water.

---

Irving I. Domsky, Ph.D.  
Laboratory Director

---



ACTS LABORATOIRE D'ESSAIS  
 Les Poupiliers - Rue du Vertuquat  
 59960 Neuville en Ferrain - France  
 Tél. (33) 20 46 34 56 - Fax. (33) 20 46 34 67

LABORATOIRE  
 ACCRÉDITÉ  
 SOUS LE  
 N° 1-0194



TEST REPORT No 6F-0953 (revised)  
 This report nulls and voids report 6F-0953 issued on May 20, 1996

May 31, 1996  
 Page 1/10

Address:

3 Rue Mirabeau  
 94200 IVRY SUR SEINE  
 FRANCE

SUBMITTED BY: Mme ZOGHEIB

Evaluation of an assortment of scratch-art cardboard and paper with accessories received on May 2, 1996.

Test Start: May 3, 1996

Test Finished: May 9, 1996

INTRODUCTION:

At the request of the client, the sample was evaluated for compliance with the Mechanical and Physical Hazards, Flammability and Heavy Metals content requirements, for items intended for use by children of three years of age and older, per the European Standard EN 71, Part 1: 1988, Part 2: 1993 and Part 3: 1994.

Sample Identification:

ASSORTMENT OF SCRATCH-ART CARDBOARD AND PAPER WITH ACCESSORIES:

-12 "Scratch Art" papers (blue, yellow, red, white, silver foil, golden foil, multicolor, fluorescent yellow, fluorescent orange, fluorescent pink, fluorescent red, fluorescent green - 3 "Scratch Boards" (scratch brite, silver, textured black) - Scratch lite stained glass effects - Trace-it white and grey transfer paper - Scratch a print - Shade jax-textured plates - Scratch foam - Scratch Etch board - Waxo Stencil paper - 3D-O'S - Disc-O'Stamp - Rubber stamp kit - Scratch tool - Stick for Scratch Art paper - Stylus - Brush - Chunk-O pen

Not Available  
 U.S.A.

Manufacturer Scratch-Art Company

This test report can be copied only in its entire version by means of a photographic copier. It contains 10 pages and no appendices.  
 The accreditation by the Testing Section of the COFRAC certifies only the technical expertise of the laboratory for those tests or analyses covered by the accreditation.

© notified body nr. 408 under directive 88/378/EEC for CE type examinations.

Seule la version française fait foi The French version is legally acceptable.

USA

Hong Kong

France

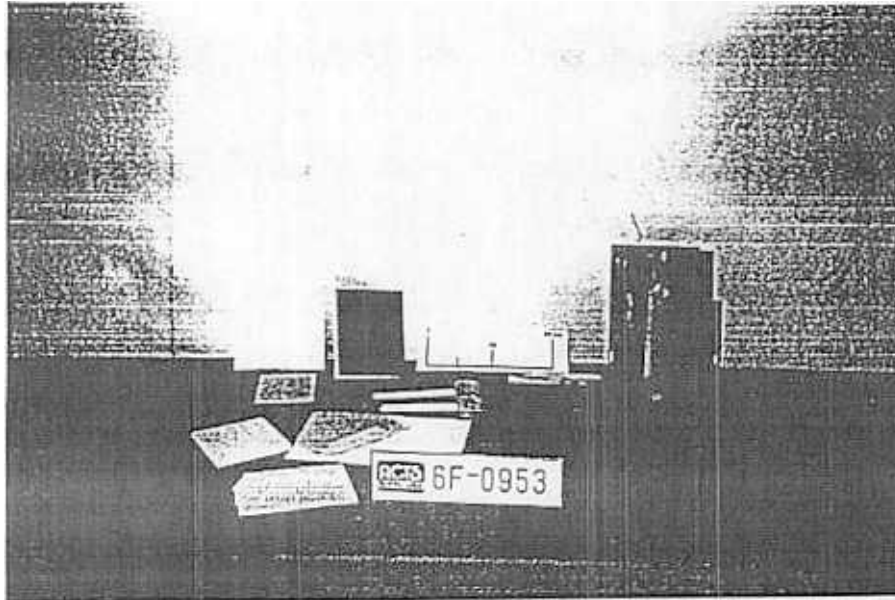
Canada

Singapour

Nos rapports d'essais et nos courriers sont réservés à l'usage exclusif de leurs destinataires. Toutes copies ou reproductions des rapports et des courriers à quelque autre partie ou entité, l'utilisation de notre nom ou marque ne peuvent se faire qu'avec notre accord écrit préalable. Nos rapports sont limités aux échantillons identifiés, soumis aux essais. Les résultats des essais ne sont pas nécessairement indicatifs, caractéristiques ou représentatifs de la qualité statistique du lot de provenance de l'échantillon, ni de produits apparemment semblables ou identiques, à moins que cela ne soit spécifiquement et formellement noté. Nos rapports incluent tous les essais demandés par le client ainsi que leurs résultats. Le client dispose d'un délai de 30 jours à compter de la réception de ce rapport d'essais pour faire effectuer des essais supplémentaires ou pour nous signaler par écrit toute omission du rapport. Cet écrit spécifiera le ou les points de contestation. Si le client ne se manifeste pas dans le délai prescrit, ceci constituera de sa part une acceptation sans réserve du rapport complet, des essais réalisés et de l'exactitude du contenu du rapport.



ASSORTMENT OF SCRATCH-ART CARDBOARD AND PAPER WITH ACCESSORIES



DESCRIPTION:

Set composed of white cardboard and white paper sheets, multicoloured paper sheets, silver and gold paper sheets, clear plastic sheets with black and multicoloured coatings, one clear plastic sheet, one white foam sheet, self-adhesive white and black foam pads, grease paper and red paper, coming with two multicoloured greasechaiks, two varnished and hardwood stilletes, one with a metal tip, two white plastic applicators with yellow foam, one red plastic stiletto with a metal blade and a black ink pad.

Sizes (mm): Applicator 156 x 39 x 24  
Greasecha 64 x 26 x 9



TEST REPORT No 6F-0953 (revised)  
 This report nulls and voids report 6F-0953 issued on May 20, 1996

May 31, 1996  
 Page 5/10

MIGRATION OF CERTAIN ELEMENTS TEST REPORT

SAMPLE IDENTIFICATION: 6F0953 - ASSORTMENT OF SCRATCH-ART CARDBOARD AND PAPER WITH ACCESSORIES

- 6F-0953 A: Black coating on scratch-art paper (67.4 milligrams)
- 6F-0953 B: Blue paper
- 6F-0953 D: Red paper
- 6F-0953 E: Yellow paper
- 6F-0953 F: White paper
- 6F-0953 H: Silver paper
- 6F-0953 I: Gold paper
- 6F-0953 J: Multicoloured paper

SOLUBLE ELEMENTS EN 71	6F-0953 A (1)	6F-0953 B	6F-0953 D	6F-0953 E	6F-0953 F	6F-0953 H	6F-0953 I	6F-0953 J	LIMITS	
									A	B
ARSENIC	< 5	< 5	< 5	< 5	< 5	< 5	< 5	< 5	25	25
MERCURY	< 10	< 10	< 10	< 10	< 10	< 10	< 10	< 10	60	25
SELENIUM	< 10	< 10	< 10	< 10	< 10	< 10	< 10	< 10	500	500
ANTIMONY	< 10	< 10	< 10	< 10	< 10	< 10	< 10	< 10	60	60
LEAD	< 10	17	< 10	< 10	< 10	< 10	< 10	< 10	90	90
CADMIUM	< 5	< 5	< 5	< 5	< 5	< 5	< 5	< 5	75	50
BARIUM	< 5	< 5	59	< 5	< 5	< 5	< 5	< 5	1000	250
CHROMIUM	< 5	< 5	< 5	< 5	< 5	< 5	< 5	< 5	60	25

Results and limits are reported as milligrams per kilogram (mg/kg).

- A : Any toy material except for modelling clay and finger paint.
- B : Modelling clay and finger paint.

The soluble content was determined by inductively coupled plasma atomic emission spectrometry or by atomic absorption spectrometry for those marked with an asterisk.

Comments : (1) A test portion of less than 100 mg has been used for testing, the quantity of the appropriate elements was calculated as if 100 mg of test portion had been used.